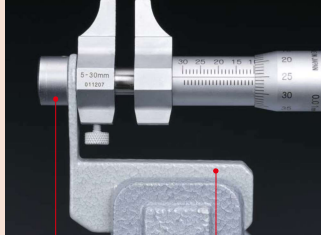


Inside Micrometers
SERIES 145 — Caliper Type

Accessories for 145-185 / 186 / 193 / 194 (optional)

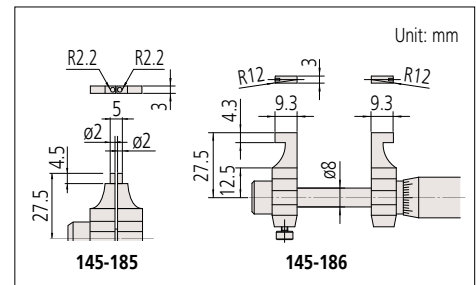


Cap (300401) Holder (300400)

Note 1: This instrument requires the cap and the holder for mounting on a micrometer stand.
Note 2: It may not be applicable to a custom specification.

- Carbide measuring faces.
- Equipped with a constant measuring-force device.
- Optional Setting Rings (nominal size below 300 mm), CERA Inside Micro Checker (more than 25 mm) and Gauge Block Accessory Sets are available as reference gages for datum adjustment. (Refer to pages C-28, C-52, and E-17 to E-20 for details)

DIMENSIONS



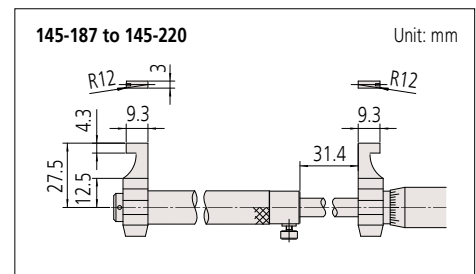
SPECIFICATIONS

Metric						
Order No.	Range (mm)	Graduation (mm)	Maximum permissible error J_{MPE} (μm)	Jaw	Mass (g)	
145-185	5 - 30	0.01	±5	Pin	130	
145-186	25 - 50		±6	Anvil	140	

Inch						
Order No.	Range (in)	Graduation (in)	Maximum permissible error J_{MPE} (in)	Jaw	Mass (g)	
145-193	0.2 - 1.2	0.001	±0.00025	Pin	130	
145-194	1 - 2		±0.0003	Anvil	140	

Note: The minimum pitch circle measurement is $\phi 5$ mm with pin type (145-185, 145-193).

DIMENSIONS



SPECIFICATIONS

Metric						
Order No.	Range (mm)	Graduation (mm)	Maximum permissible error J_{MPE} (μm)	Jaw	Mass (g)	
145-187	50 - 75	0.01	±7	Anvil	160	
145-188	75 - 100		±8	Anvil	180	
145-189	100 - 125		±9	Anvil	210	
145-190	125 - 150		±10	Anvil	230	
145-191	150 - 175		±10	Anvil	250	
145-192	175 - 200		±10	Anvil	270	
145-217	200 - 225		±11	Anvil	310	
145-218	225 - 250		±11	Anvil	330	
145-219	250 - 275		±12	Anvil	350	
145-220	275 - 300		±12	Anvil	370	

Inch						
Order No.	Range (in)	Graduation (in)	Maximum permissible error J_{MPE} (in)	Jaw	Mass (g)	
145-195	2 - 3	0.001	±0.00035	Anvil	160	
145-196	3 - 4		±0.0004	Anvil	180	