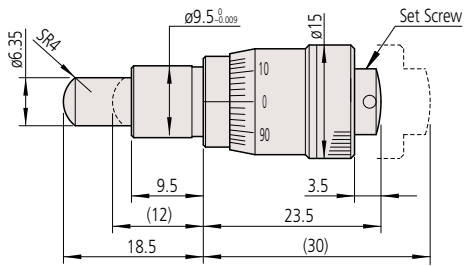


Micrometer Heads SERIES 148 — Fine Spindle Feed of 0.1 mm/rev

DIMENSIONS

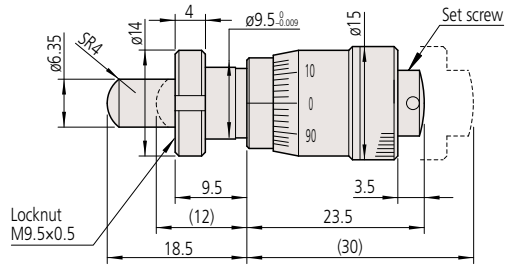
Unit: mm

Plain Stem

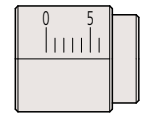


148-342 Mass: 29 g

Stem Locknut

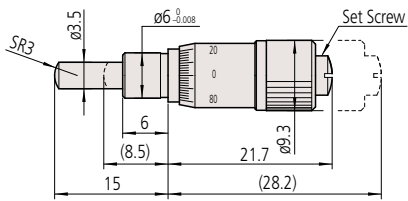


• Fixture thickness: 6 mm
148-343 Mass: 31 g



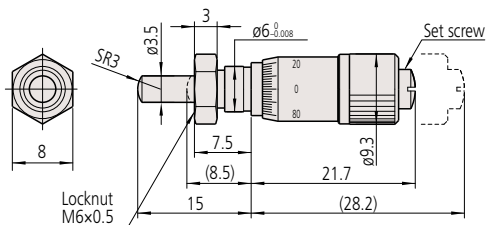
Sleeve marker

Plain Stem

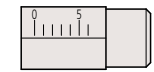


148-242 Mass: 10 g

Stem Locknut

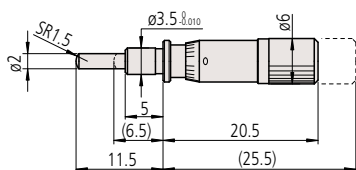


• Fixture thickness: 4 mm
148-243 Mass: 10 g



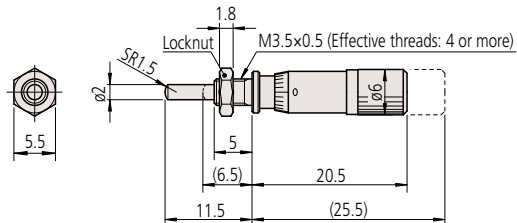
Sleeve marker

Plain Stem



148-244 Mass: 4 g

Stem Locknut



• Fixture thickness: 3 mm
148-245 Mass: 5 g



Sleeve marker

(): with spindle fully retracted.