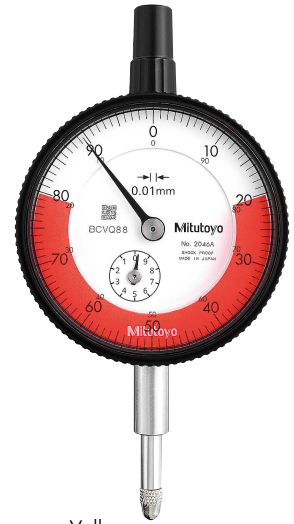


## Limit Stickers

- Stuck onto the dial indicator's dial face or crystal, these stickers indicate the tolerance limits. They are available in three colors: red, green, and yellow. They are available only for SERIES 2 dial indicators.



Red



**136420**  
(10 sheets/set)

Green



**136421**  
(10 sheets/set)

Yellow



**136422**  
(10 sheets/set)

The limit hand and bezel clamp are now available as options.

For SERIES 2, 3 and 4

- Limit hand (2 pcs.): **21AZB195**
- Bezel clamp: **21AZB148** (mm type)  
**21RZA065** (inch type)  
**21RZA067** (for **2424A(B)-19**)

For SERIES 1

- Limit hand (2 pcs.): **21AAB363**
- Bezel clamp: **21RZA149** (mm type, inch type)



Limit hand (2 pcs.)



Bezel clamp

## Color-coded Spindle Caps

- 9 color-coded spindle caps are available for dial indicators with a range of 10 mm or less.



Note: When attaching to small dial indicators, the measuring range height will be 8 mm taller.

Color	Order No.	
	Standard	Water-proof
Black	<b>21AAB675</b>	<b>21AAB676</b>
White	<b>21AAB675W</b>	<b>21AAB676W</b>
Red	<b>21AAB675R</b>	<b>21AAB676R</b>
Green	<b>21AAB675G</b>	<b>21AAB676G</b>
Blue	<b>21AAB675B</b>	<b>21AAB676B</b>
Yellow	<b>21AAB675Y</b>	<b>21AAB676Y</b>
Orange	<b>21AAB675D</b>	<b>21AAB676D</b>
Pink	<b>21AAB675P</b>	<b>21AAB676P</b>
Navy	<b>21AAB675S</b>	<b>21AAB676S</b>

Note: This accessory is not applicable to **1003A(B)**, **1911A(B)-10**, **1913A(B)-10**, **1921A(B)-10**, **1923A(B)-10**, **1925A(B)-10**, **2971AB**, **2972AB**, **2973AB**, **2976AB**, **2977AB**, and **2978AB**.