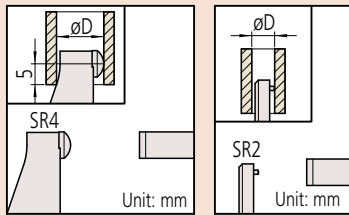




Dust- and Water-Protected
www.tuv.com
ID: 000004091

Applicable models: series 395

Measurement example



Other than 115-101

115-101

Optional Accessories

Order No.	Type	Description
05CZA662	B	Connecting cable for series 395 (1 m)
05CZA663	B	Connecting cable for series 395 (2 m)
06AFM380B	B	USB Input Tool Direct (2 m)
02AZD790B	B	Connecting cables for U-WAVE-T (160 mm)
02AZE140B	B	Connecting cables for U-WAVE-T For foot switch
264-622	IP67	U-WAVE-TM
264-623	Buzzer	U-WAVE-TM
264-626	IP67	U-WAVE-TMB
264-627	Buzzer	U-WAVE-TMB
02AZF310	IP67 / buzzer	Connecting unit for U-WAVE-TM/TMB

Tube Micrometers
SERIES 395, 115, 295

- Measuring faces: Carbide. (115-101: only the spindle is carbide tipped.)
- series 395: IP65 digimatic model.
- Equipped with Ratchet Stop for constant measuring force.



395-251-30

SPECIFICATIONS

Metric					
Order No.	Range (mm)	Resolution (mm)	Maximum permissible error J_{MPE} (μm)	øD (mm)	Flatness (μm)
Digimatic (LCD)					
395-251-30	0 - 25	0.001	±2	ø15	0.3
395-252-30	25 - 50			ø19	
395-253-30	50 - 75			ø20	
395-254-30	75 - 100			±3	

Inch / Metric					
Order No.	Range (in)	Resolution	Maximum permissible error J_{MPE} (in)	øD (in)	Flatness (in)
Digimatic (LCD)					
395-351-30	0 - 1	0.00005 in / 0.001 mm	±0.0001	ø0.59	0.000012
395-352-30	1 - 2			ø0.75	
395-353-30	2 - 3	±0.00015	ø0.79		
395-354-30	3 - 4				

- Battery: SR44 (1 pc.), 938882, for initial operational checks (standard accessory)
 - Battery life: Approx. 2.4 years under normal use
 - Length standard: Electromagnetic rotary sensor
 - Standard accessories: Setting standard, 1 pc. (except for measuring range 0 to 25 mm (0 to 1 in) models), Spanner (301336), 1 pc.
- Note: For functional details, refer to page B-7.
Optional connecting cable is available only for water-proof type (Digimatic model).



115-115

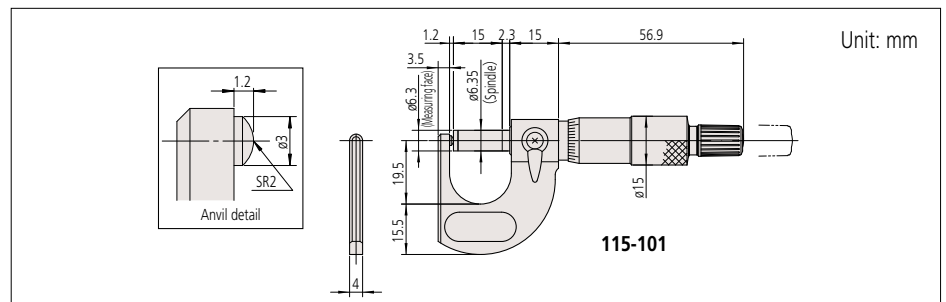
SPECIFICATIONS

Metric					
Order No.	Range (mm)	Graduation (mm)	Maximum permissible error J_{MPE} (μm)	øD (mm)	Flatness (μm)
Analog					
115-101	0 - 15	0.01	±3	ø5.5	0.6
115-115	0 - 25			ø10	
115-116	25 - 50			ø11	
115-117	50 - 75			ø17	
115-118	75 - 100	±4	ø18		
Mechanical counter model					
295-115	0 - 25	0.01	±3	ø10	0.6

Inch					
Order No.	Range (in)	Graduation (in)	Maximum permissible error J_{MPE} (in)	øD (in)	Flatness (in)
Analog					
115-153	0 - 1	0.0001	±0.00015	ø0.40	0.000024
Mechanical counter model					
295-153	0 - 1	0.0001	±0.00015	ø0.40	0.000024

- Standard accessories: Setting standard, 1 pc. (except for measuring range 0 to 15 mm / 0 to 25 mm (0 to 1 in) models)
- Spanner (200168), 1 pc. (for 115-101), Spanner (301336), 1 pc. (for models other than 115-101)

DIMENSIONS



115-101

Unit: mm