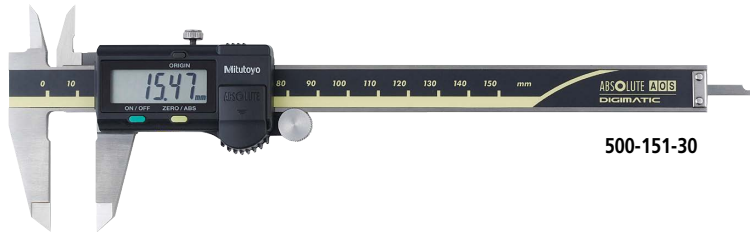


Calipers

ABSOLUTE Digimatic Caliper SERIES 500 — with exclusive ABSOLUTE Encoder Technology

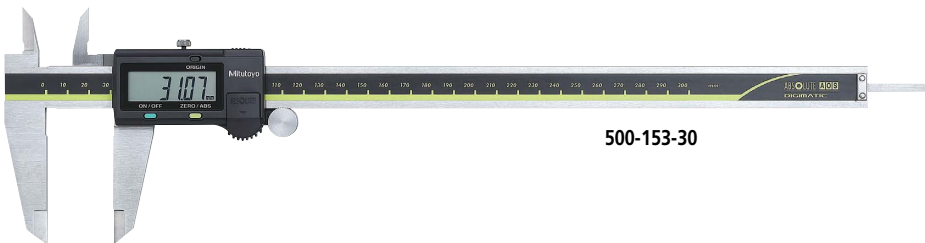
- The ZERO/ABS button allows the display to be Zero-Set at any slider position along the scale. In addition, no overspeed-errors will occur.
- Carbide-tipped jaw calipers are optimal for rough finished parts, castings, grinding stones, etc.
- Allows integration into statistical process control and measurement systems for models with measurement data output connector. (Refer to page A-3.)



500-151-30



500-182-30



500-153-30

SPECIFICATIONS

Metric								
Order No.	Range (mm)	Resolution (mm)	Maximum permissible error (mm) ^{*2}		Mass (g)	Depth bar	Fine adjustment	Remarks
			<i>E</i> _{MPE}	<i>S</i> _{MPE}				
500-150-30	0 - 100	0.01	±0.02	±0.04	143	ø1.9 mm rod	with thumb roller	—
500-180-30 ^{*1}							—	
500-151-30							—	
500-154-30	0 - 150	0.01	±0.02	±0.04	168	Blade	with thumb roller	Carbide-tipped jaws for outside measurement
500-155-30							—	Carbide-tipped jaws for outside and inside measurement
500-158-30							—	—
500-181-30 ^{*1}							—	—
500-152-30	0 - 200	0.01	±0.02	±0.04	198	Blade	with thumb roller	Carbide-tipped jaws for outside measurement
500-156-30							—	Carbide-tipped jaws for outside and inside measurement
500-157-30							—	—
500-182-30 ^{*1}							—	—
500-153-30							with thumb roller	—

- Battery: SR44 (1 pc.), **938882**, for initial operational checks (standard accessory)
- Scale type: ABSOLUTE electromagnetic induction linear encoder
- Battery life: Approx. 5 years under normal use
- Max. response speed: Unlimited
- *1 Without SPC data output
- *2 Partial Surface Contact Error, *E*_{MPE} and Shift Error, *S*_{MPE} are terms (notations) used in ISO 13385-1:2019.



Functions

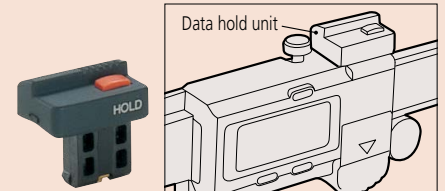
- Absolute measurement
- Incremental measurement
- Low-voltage alert
- Data output
- Note: See SPECIFICATIONS for excluded items.
- Data hold

Optional Accessories

(Note: Usable only for models with SPC data output. Refer to page A-21 for details.)

Order No.	Type	Description
959149	C	Connecting cables for IT/DP/MUX (1 m)
959150	C	Connecting cables for IT/DP/MUX (2 m)
06AFM380C	C	USB Input Tool Direct (2 m)
02AZD790C	C	Connecting cables for U-WAVE-T (160 mm)
02AZE140C	C	Connecting cables for U-WAVE-T For foot switch
264-621	Buzzer	U-WAVE-TC
264-625	Buzzer	U-WAVE-TCB
02AZF300	Buzzer	Connecting unit for U-WAVE-TC/TCB

Data hold unit



959143