



**Functions**

- Peak detection (MAX/MIN)
- Runout (MAX - MIN) Hold
- Note: Peak detection
  - 1) Sampling rate: 50 readings/s
  - 2) Capturing speed: 50 µm/s (max.)
- Zeroret (INC system)
- Preset function (ABS system)
- Measuring direction switching
- Tolerance judgment (3 pairs of ABS, INC memory function)
- Resolution selection
- Simple calculation f(x) =Ax
- Analog bar resolution selection
- Key lock
- in/mm conversion (inch/mm type)
- Display hold (when no external device is connected)
- Data output
- External PC setting input
- Display rotation (330°)
- Low battery voltage alarm display
- Error alarm display

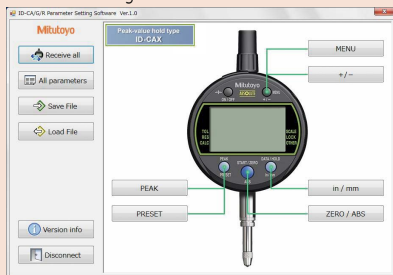
**Optional Accessories**

- Lifting
    - Lifting lever **21EZA198**
    - Lifting knob **21EZA105**
  - SPC Cable:
    - 905338** (1 m)
    - 905409** (2 m)
  - USB Input Tool Direct (2 m) : **06AFM380F**
  - Input Tool Series
    - IT-020U** (USB Keyboard Signal Conversion Type): **264-020**
    - IT-007R** (RS-232C Communication Conversion Type): **264-007**
  - Connecting Cables for **U-WAVE-T** (160 mm):
    - 02AZD790F**
    - For foot switch: **02AZE140F**
  - Digimatic Mini-Processor **DP-1VA LOGGER**: **264-505**
  - Parameter setup kit: **21EZA313**
- Note: Parameter setting software (can be downloaded for free from the Mitutoyo website) is also required.



Parameter setup kit

Parameter setting software



**ABSOLUTE Digimatic Indicator ID-C SERIES 543 — Peak-Value Hold Type**

- Run-out/MAX-MIN Hold function enables GO/NG judgment\*1 for peak or difference values.
  - Five buttons, status icons, and clear button indications allow for easy operation of a wide variety of functions.
  - Wide LCD and new analog bar graph are now standard on all models.
  - The ABS (absolute) scale restores the last origin position\*2 automatically when the indicator is turned on, and realizes high reliability by eliminating over-speed errors.
  - By using the parameter setup kit (optional) and the dedicated software, the functions and the parameters can be configured using a computer.
  - Equipped with a data output port that enables incorporation into measurement networking and statistical process control systems. (Refer to page A-3)
- \*1 Tolerance judgment results cannot be output.  
\*2 Refer to "Origin Setting of Digimatic Indicators" on page F-25.



543-300-10 / 543-300B-10

**SPECIFICATIONS**

Metric		ISO/JIS type		ASME/ANSI/AGD type						
Order No. (w/lug, flat back)	Range (mm)	Resolution (mm)	Maximum permissible error (mm)	Measuring force MPL (N)	Power supply	Battery life (normal use)*2	Net mass (g)			
			MPE <sub>E</sub> *1	Hysteresis MPE <sub>H</sub>	Repeatability MPE <sub>R</sub>					
<b>543-300-10</b>	12.7	0.001 / 0.01 (selectable)	0.003	0.002	0.002	1.5 or less	CR2032x1 pc.	Approx. 1 year	180	
<b>543-300B-10</b> *3									170	

Inch / Metric		ISO/JIS type		ASME/ANSI/AGD type						
Order No. (w/lug, flat back)	Range	Resolution	Maximum permissible error	Measuring force MPL (N)	Power supply	Battery life (normal use)*2	Net mass (g)			
			MPE <sub>E</sub> *1	Hysteresis MPE <sub>H</sub>	Repeatability MPE <sub>R</sub>					
<b>543-301-10</b>	0.5 in / 12.7 mm	0.00005 / 0.0001 / 0.0005 in, 0.001 / 0.01 mm (selectable)	±0.00010 in / 0.003 mm	0.00010 in / 0.002 mm	0.00010 in / 0.002 mm	1.5 or less	CR2032x1 pc.	Approx. 1 year	180	
<b>543-301B-10</b> *3									170	
<b>543-302-10</b>									195	
<b>543-302B-10</b> *3									170	

\*1 Error of indication for the total measuring range  
\*2 Applies only if not connected to a data processor. Battery life depends on use of the indicator. Use the above value as a guide only.  
\*3 Flat back

# Digimatic Indicators

## DIMENSIONS

