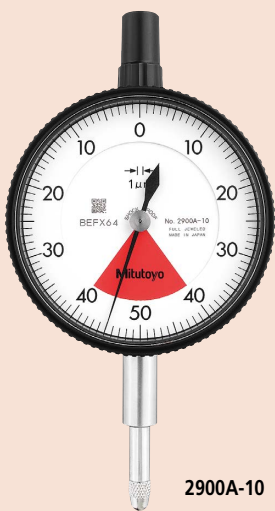


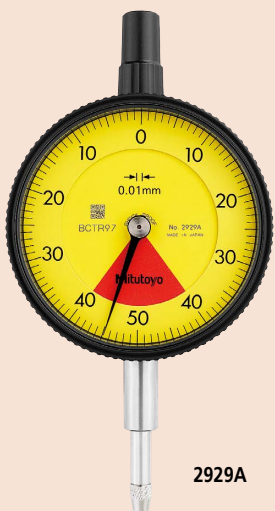


**SERIES 2 — Standard One Revolution Type for Error-free Reading**

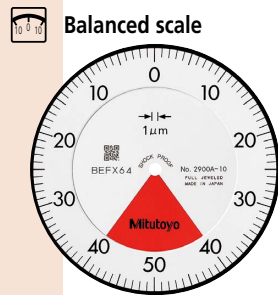
- This series has been developed to eliminate the possibility of reading errors due to miscounting multiple revolutions.
- Mitutoyo's unique shock-proof mechanism is incorporated, providing improved resistance to shock due to sudden spindle retraction caused by impact.
- The bezel clamp and lifting lever (optional) can be attached to either the right or left side.
- These parts can be easily installed and removed without tools.
- The stem and spindle are made of high-strength quench-hardened stainless steel suitable for heavy-duty use.
- A carbide contact point is used.
- Application of an anti-reflective and hard surface coating improves scale visibility along with scratch and chemical resistance.
- The dead zone in red indicates "accuracy not guaranteed".



2900A-10

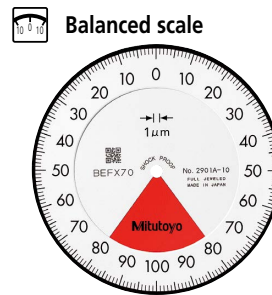


2929A



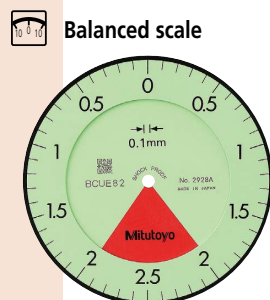
Balanced scale

- Graduation: 0.001 mm, Measuring range: 0.08 mm
- 2900A-10**
- One revolution
  - Shockproof
  - Jeweled bearing
- 2900A-72**
- One revolution
  - Shockproof
  - Dustproof
  - Jeweled bearing



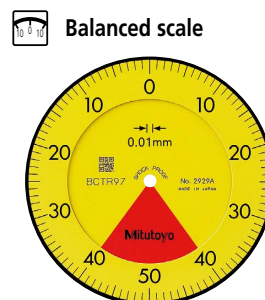
Balanced scale

- Graduation: 0.001 mm, Measuring range: 0.16 mm
- 2901A-10**
- One revolution
  - Shockproof
  - Jeweled bearing



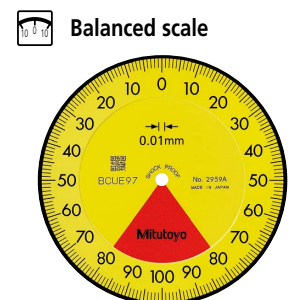
Balanced scale

- Graduation: 0.1 mm, Measuring range: 4 mm
- 2928A**
- One revolution
  - Shockproof



Balanced scale

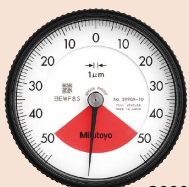
- Graduation: 0.01 mm, Measuring range: 0.8 mm
- 2929A**
- One revolution
  - Shockproof
- 2929A-62**
- One revolution
  - Shockproof
  - Dustproof



Balanced scale

- Graduation: 0.01 mm, Measuring range: 1.6 mm
- 2959A**
- One revolution
  - Shockproof

One revolution type Back Plunger dial gages are also available. (Refer to pages F-55 to F-56 for details.)

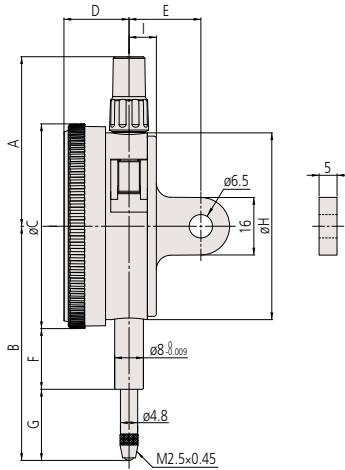


2990A-10

# Dial Indicators

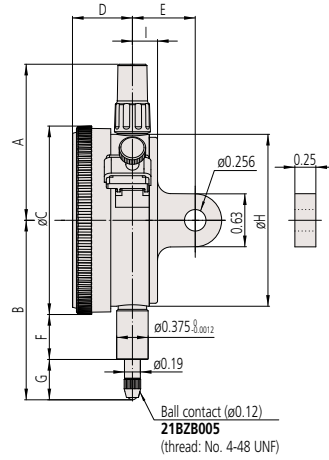
## DIMENSIONS

ISO/JIS Type



Unit: mm

ANSI/AGD Type



Unit: in

Order No.	A	B	C	D	E	F	G	H	I	Mass (g)	
										w/lug	Flat-back
2928A	47.2	65.2	57	18.1	20	16.9	19.8	52	7.6	145	136
2929A	47.2	65.2	57	18.1	20	16.9	19.8	52	7.6	145	136
2929A-62	47.2	65.2	57	18.1	20	16.9	19.8	52	7.6	145	136
2959A	47.2	65.2	57	18.1	20	16.9	19.8	52	7.6	145	136
2900A-10	47.2	66	57	18.1	20	16.9	20.6	52	7.6	149	140
2900A-72	47.2	66	57	18.1	20	16.9	20.6	52	7.6	149	140
2901A-10	47.2	66.1	57	18.1	20	16.9	20.7	52	7.6	149	140

Order No.	A	B	C	D	E	F	G	H	I	Mass (g)	
										w/lug	Flat-back
2909A-62	1.86	2.04	2.24	0.71	3/4	0.54	0.39	2.05	0.30	163	138
2910A-10	1.86	2.02	2.24	0.71	3/4	0.54	0.36	2.05	0.30	164	139

Note: Refer to pages F-57 to F-60 for details of contact points.

## FEATURES

Metric

Order No.						
2928A	2928AB	✓	✓	✓		
2929A	2929AB	✓	✓	✓		
2929A-62	2929AB-62	✓	✓	✓		✓
2959A	2959AB	✓	✓	✓		
2900A-10	2900AB-10	✓	✓	✓		✓
2900A-72	2900AB-72	✓	✓	✓		✓
2901A-10	2901AB-10	✓	✓	✓		✓

Inch

Order No.						
2909A-62	2909AB-62	✓	✓	✓		✓
2910A-10	2910AB-10	✓	✓	✓		✓

## SPECIFICATIONS

Metric

Order No.		Graduation (mm)	Range (range/rev) (mm)	Maximum permissible error (MPE) (μm)					Dial reading	Measuring force (N)	
w/lug	Flat-back			Indication error				Hysteresis			Repeat-ability
				1/10 Rev	1/2 Rev	1 Rev	Measuring range				
2928A	2928AB	0.1	4 (5)	20	—	—	40	20	20	2-0-2	1.4 or less
2929A	2929AB	0.01	0.8 (1)	5	—	—	8	3	3	40-0-40	1.4 or less
2929A-62	2929AB-62	0.01	0.8 (1)	5	—	—	8	3	3	40-0-40	2.0 or less
2959A	2959AB	0.01	1.6 (2)	5	—	—	10	3	3	80-0-80	1.4 or less
2900A-10	2900AB-10	0.001	0.08 (0.1)	2	—	—	3	2	0.5	40-0-40	1.5 or less
2900A-72	2900AB-72	0.001	0.08 (0.1)	2	—	—	3	2	0.5	40-0-40	2.0 or less
2901A-10	2901AB-10	0.001	0.16 (0.2)	2	—	—	4	2	0.5	80-0-80	1.5 or less

Note: Completed products inspection is performed in the vertical orientation (contact point downward) and the stated accuracy is guaranteed.

Inch

Order No.		Graduation (in)	Range (range/rev) (in)	Accuracy (in)			Repeat-ability (in)	Dial reading	Measuring force (N)
w/lug	Flat-back			First 1 Rev/2.5 Rev/10 Rev		Retrace			
				±0.0005/—/—	±0.0016				
2909A-62	2909AB-62	0.0005	0.04/0.05	±0.0005/—/—	0.00016	±0.0001	20-0-20	2.5 or less	
2910A-10	2910AB-10	0.0001	0.008/0.01	±0.0001/—/—	0.0001	±0.00003	4-0-4	1.8 or less	

Note: Completed products inspection is performed in the vertical orientation (contact point downward) and the stated accuracy is guaranteed.

## Optional Accessories

- Limit hand (2 pcs.): **21AZB195**



- Bezel clamp: **21AZB148** (for metric type)  
**21RZA065** (for inch type)



**21AZB148**