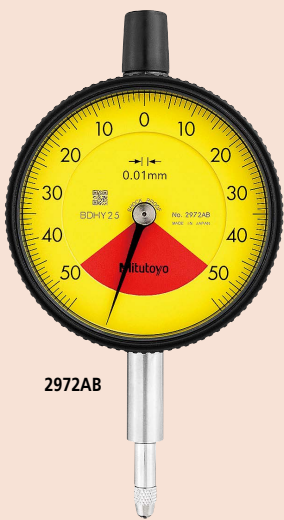




SERIES 2 — Standard One Revolution Type for Error-free Reading, Lightweight Type

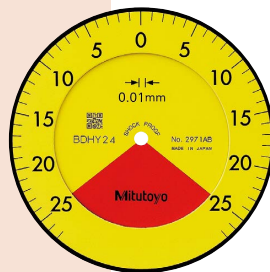
- This series has been developed to eliminate the possibility of reading errors due to miscounting multiple revolutions.
- Mitutoyo's unique shock-proof mechanism is incorporated, providing improved resistance to shock due to sudden spindle retraction caused by impact.
- The stem and spindle are made of high-strength quench-hardened stainless steel suitable for heavy-duty use.
- A carbide contact point is used.
- Application of an anti-reflective and hard surface coating improves scale visibility along with scratch and chemical resistance.
- Lightweight type (70 g).
- The dead zone in red indicates "accuracy not guaranteed".



2972AB



Balanced scale



Graduation: 0.01 mm,
Measuring range: 0.5 mm

2971AB

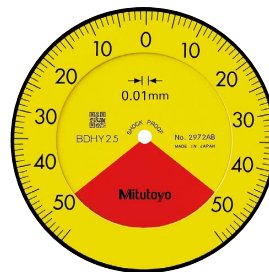
One revolution

Shockproof

Dustproof



Balanced scale



Graduation: 0.01 mm,
Measuring range: 1 mm

2972AB

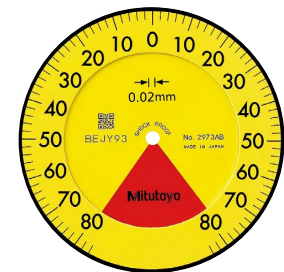
One revolution

Shockproof

Dustproof



Balanced scale



Graduation: 0.02 mm,
Measuring range: 1.6 mm

2973AB

One revolution

Shockproof

Dustproof

Dial Indicators

DIMENSIONS

ISO/JIS Type

Unit: mm

ANSI/AGD Type

Unit: in

Note 1: When installing an optional back (refer to page F-61 for details) 4 retaining screws must also be obtained (**546666**: Self-tapping screw only for plastic).
 Do not apply a tightening torque of more than 20 N-cm in order to avoid stripping the screw threads.
 Note 2: An optional lifting lever, release or bezel clamp cannot be installed.

Metric									
Order No.	A	B	C	D	F	G	H	I	Mass (g)
2971AB	43.2	65.6	57	16.9	20.3	16.8	55	7.6	70
2972AB	43.2	66	57	16.9	20.3	17.2	55	7.6	
2973AB	43.2	66.3	57	16.9	20.3	17.5	55	7.6	

Inch									
Order No.	A	B	C	D	F	G	H	I	Mass (g)
2976AB	1.70	2.55	2.24	0.67	0.80	0.63	2.17	0.30	70
2977AB	1.70	2.56	2.24	0.67	0.80	0.64	2.17	0.30	
2978AB	1.70	2.57	2.24	0.67	0.80	0.65	2.17	0.30	

Note: Refer to pages F-57 to F-60 for details of contact points.

FEATURES

Metric						
Order No.	w/lug	Flat-back	16/10	10/10	5/5	10/10
2971AB	—	✓	✓	✓	✓	✓
2972AB	—	✓	✓	✓	✓	✓
2973AB	—	✓	✓	✓	✓	✓

Inch						
Order No.	w/lug	Flat-back	16/10	10/10	5/5	10/10
2976AB	—	✓	✓	✓	✓	✓
2977AB	—	✓	✓	✓	✓	✓
2978AB	—	✓	✓	✓	✓	✓

SPECIFICATIONS

Metric										□ ISO/JIS type		
Order No.	w/lug	Flat-back	Graduation (mm)	Range (range/rev) (mm)	Maximum permissible error (MPE) (μm)					Dial reading	Measuring force (N)	
					Indication error			Hysteresis	Repeat-ability			
		1/10 Rev	1/2 Rev	1 Rev	Measuring range							
2971AB	—	—	0.01	0.5 (0.7)	5	—	—	8	3	3	25-0-25	1.4 or less
2972AB	—	—	0.01	1 (1.4)	5	—	—	8	3	3	50-0-50	1.4 or less
2973AB	—	—	0.02	1.6 (2)	8	—	—	16	6	5	80-0-80	1.4 or less

Note: Completed products inspection is performed in the vertical orientation (contact point downward) and the stated accuracy is guaranteed.

Inch										□ ANSI/AGD type
Order No.	w/lug	Flat-back	Graduation (in)	Range (range/rev) (in)	Accuracy (in)			Repeat-ability (in)	Dial reading	Measuring force (N)
					First 1 Rev/2.5 Rev/10 Rev	Retrace				
2976AB	—	—	0.0005	0.02 (0.028)	±0.0005/—/—	0.00016	±0.0001	10-0-10	1.4 or less	
2977AB	—	—	0.0005	0.04 (0.055)	±0.0005/—/—	0.00016	±0.0001	20-0-20	1.4 or less	
2978AB	—	—	0.001	0.06 (0.079)	±0.001/—/—	0.0002	±0.0002	30-0-30	1.4 or less	

Note: Completed products inspection is performed in the vertical orientation (contact point downward) and the stated accuracy is guaranteed.

Optional Accessory

- Limit hand (2 pcs.): **21AZB195**

