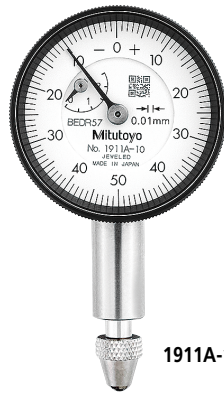




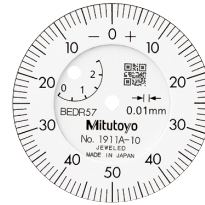
SERIES 1 — Compact Type, Extra Small Diameter

- Compact dial indicators with bezel diameters of 31 or 36 mm for restricted-space applications in gaging jigs.



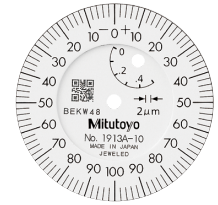
1911A-10

 **Balanced scale**

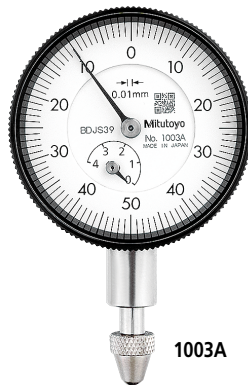


Graduation: 0.01 mm, Measuring range: 2.5 mm  **Jeweled bearing**

 **Balanced scale**

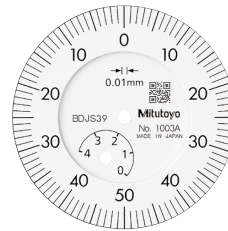


Graduation: 0.02 mm, Measuring range: 0.5 mm  **Jeweled bearing**



1003A

 **Balanced scale**



Graduation: 0.01 mm, Measuring range: 4 mm **1003A**

DIMENSIONS

ISO/JIS Type	ANSI/AGD Type
1911A-10/1913A-10	1921A-10/1923A-10/1925A-10
1003A	
Unit: mm	Unit: in

Metric											Unit: mm	
Order No.	A	B	C	D	E	F	G	H	I	Mass (g)		
											w/lug	Flat-back
1911A-10	15.5	42	31	13.6	19.4	15.1	11.5	30	6	55	51	
1913A-10	15.5	39.5	31	13.6	19.4	15.1	8.9	30	6	55	51	
1003A	18	40.3	36	13.5	15	9.5	12.8	32	6	51	48	

Inch											Unit: in	
Order No.	A	B	C	D	E	F	G	H	I	Mass (g)		
											w/lug	Flat-back
1921A-10	0.61	1.58	1.22	0.52	3/4	0.59	0.37	1.18	0.27	55	51	
1923A-10	0.61	1.51	1.22	0.52	3/4	0.59	0.31	1.18	0.27	55	51	
1925A-10	0.61	1.48	1.22	0.52	3/4	0.59	0.28	1.18	0.27	55	51	

Note 1: Limit hands, bezel clamps and lifting levers cannot be installed.
 Note 2: The shoulder on a contact point (standard accessory) acts as a stop to prevent spindle overrun that may otherwise damage the indicator. For this reason, if you need to install an optional contact point with an outside diameter smaller than 7 mm, use a washer (with outside diameter of at least 7 mm, inside diameter of 3 mm, and thickness of approx. 0.5 mm) placed between the contact point and the spindle.
 Note 3: Being fixed by only two retaining screws, the back cannot be rotated by 90° to change the orientation of the lug.

SPECIFICATIONS

Metric											ISO/JIS type	
Order No.	w/lug	Flat-back	Graduation (mm)	Range (range/rev) (mm)	Maximum permissible error (MPE) (µm)						Dial reading	Measuring force (N)
					Indication error			Hysteresis	Repeat-ability	Measuring range		
				1/10 Rev	1/2 Rev	1 Rev						
1911A-10	1911AB-10		0.01	2.5 (1)	8	9	10	12	4	3	0-50-0	1.8 or less
1913A-10	1913AB-10		0.002	0.5 (0.2)	2.5	4	5	6	2.5	1	0-100-0	1.8 or less
1003A	1003AB		0.01	4 (1)	8	10	11	13	4	3	0-50-0	1.4 or less

Note: Completed products inspection is performed in the vertical orientation (contact point downward) and the stated accuracy is guaranteed.

Inch											ANSI/AGD type	
Order No.	w/lug	Flat-back	Graduation (in)	Range (range/rev) (in)	Accuracy (in)				Repeat-ability (in)	Dial reading	Measuring force (N)	
					First 1 Rev/2.5 Rev/10 Rev		Retrace					
1921A-10	1921AB-10		0.001	0.1 (0.04)	±0.001/±0.001/—		0.0002	±0.0002		0-20-0	1.8 or less	
1923A-10	1923AB-10		0.0005	0.05 (0.02)	±0.0005/±0.005/—		0.00016	±0.0001		0-10-0	1.8 or less	
1925A-10	1925AB-10		0.0001	0.025 (0.01)	±0.0002/±0.0002/—		0.0001	±0.00003		0-5-0	1.8 or less	

Note: Completed products inspection is performed in the vertical orientation (contact point downward) and the stated accuracy is guaranteed.