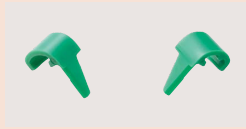




## Optional Accessories

- Limit hand (2 pcs.): **21AZB195**



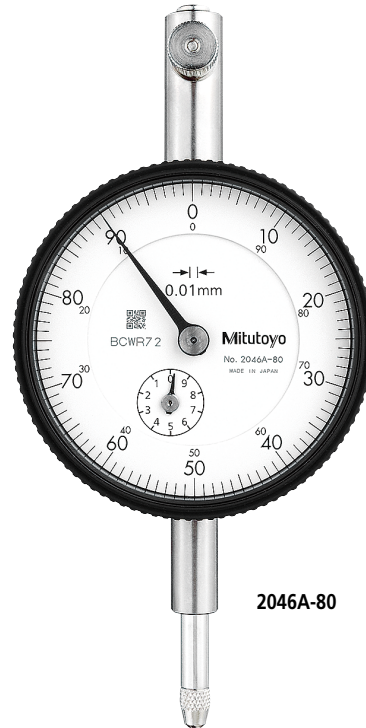
- Bezel clamp: **21AZB148**



## SERIES 2 — Special Dial Indicators

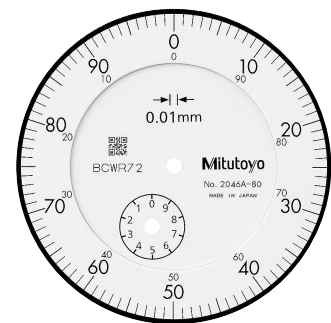
- A mechanism holds the pointer and the spindle at the position of maximum depression and hence displays the maximum value.

Note: Clearance of peak hold: Push the mechanism release in the direction of the arrow indicated in the dimensional drawing below.



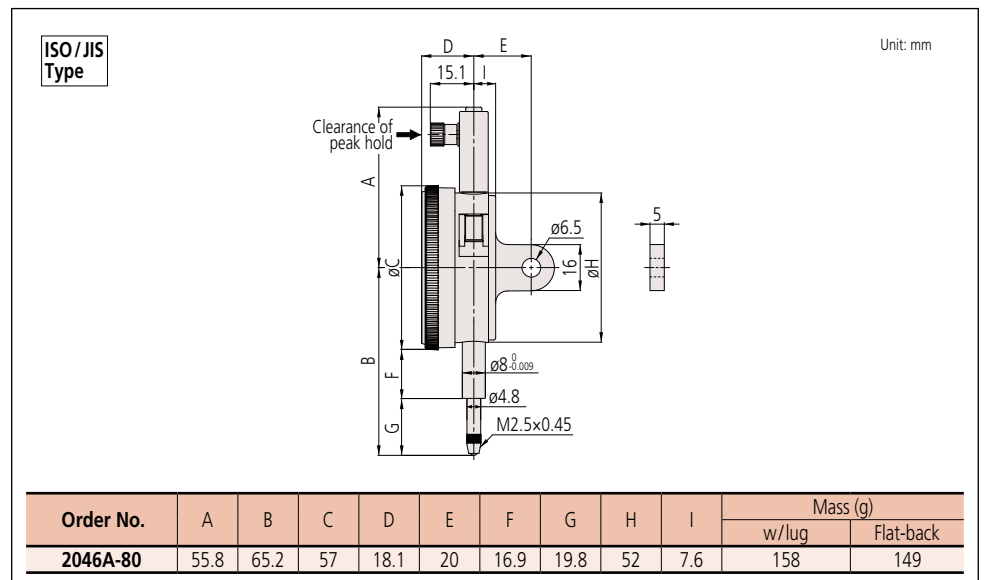
2046A-80

Continuous scale



Graduation: 0.01 mm, Measuring range: 10 mm **2046A-80** Peak retaining

## DIMENSIONS



## FEATURES

Metric					
Order No.					
w/lug	Flat-back				
2046A-80	2046AB-80	✓		✓	

## SPECIFICATIONS

Metric		ISO/JIS type									
Order No.	Graduation (mm)	Range (range/rev) (mm)	Maximum permissible error (MPE) (μm)					Hysteresis	Repeat-ability	Dial reading	Measuring force (N)
			Indication error		Measuring range	Hysteresis	Repeat-ability				
w/lug	Flat-back	1/10 Rev	1/2 Rev	1 Rev				Measuring range	Hysteresis	Repeat-ability	Dial reading
2046A-80	2046AB-80	0.01	10 (1)	5	9	10	15	—	—	±0-100	5.0 or less

Note: Completed products inspection is performed in the vertical orientation (contact point downward) and the stated accuracy is guaranteed.