

Dial Indicators

Back Plunger Type Dial Indicators SERIES 2

- This series has been developed to eliminate the possibility of reading errors due to miscounting multiple revolutions.
- Back Plunger type dial indicators are suitable for mounting onto leveling machine tool tables or inspection jigs, and for use in small spaces where the graduations of standard dial indicators are difficult to see.
- Mitutoyo's proprietary shock-proofing mechanism provides excellent durability and shock resistance.
- Model **2990A-10** provides 0.001 mm graduation.



Holding bar (optional)

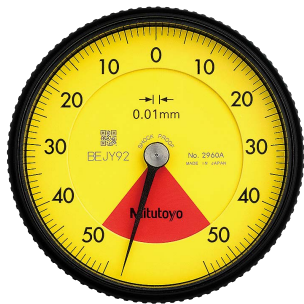
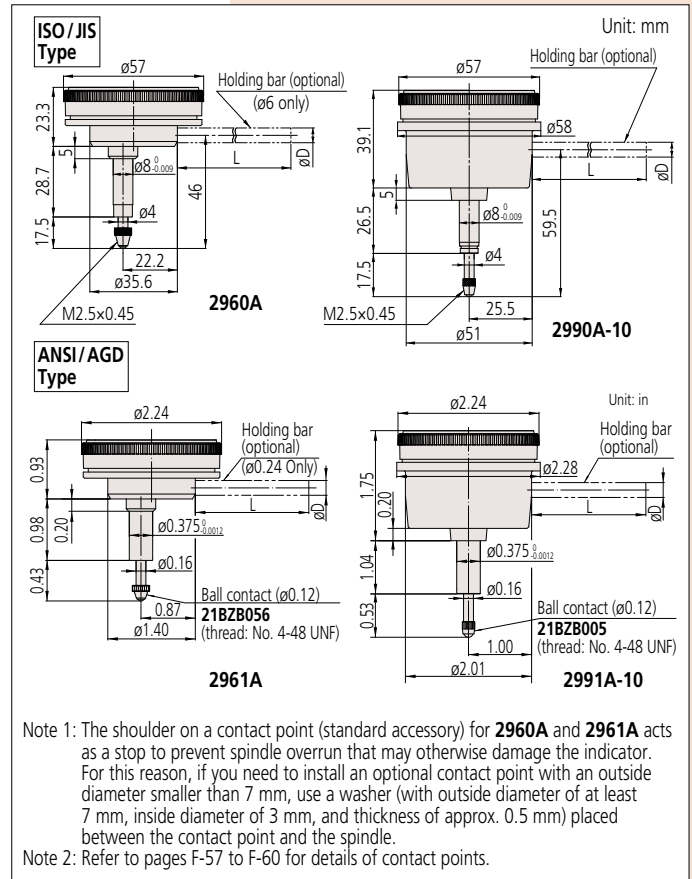
Order No.	øD (mm)	L (mm)
21AAA166	ø6	42
136567	ø6	81
124625	ø6.35	81
21AAA167	ø6.35	42
21AAA168	ø8	42
136568	ø8	81

Note: øD and L: detail shown in drawing below.

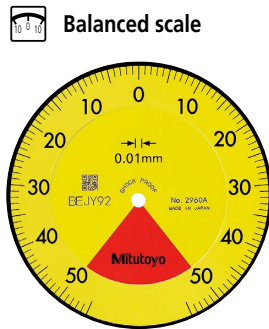
Optional Accessory

- Limit hand (2 pcs.): **21AZB195**

DIMENSIONS

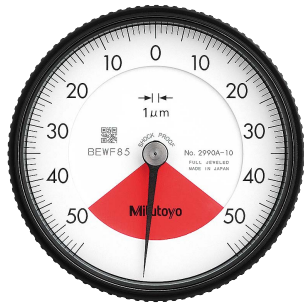


2960A

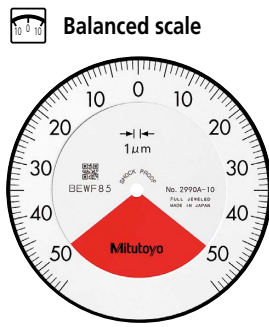


Balanced scale

- Graduation: 0.01 mm, Measuring range: 1 mm
- 2960A**
- One revolution
 - Shockproof
 - Back Plunger



2990A-10



Balanced scale

- Graduation: 0.01 mm, Measuring range: 1 mm
- 2990A-10**
- One revolution
 - Shockproof
 - Back Plunger
 - Jeweled bearing

Order No.	Graduation (mm)	Range (range/rev) (mm)	Maximum permissible error (MPE) (μm)					Dial reading	Measuring force (N)	
			Indication error				Hysteresis			Repeatability
			1/10 Rev	1/2 Rev	1 Rev	Measuring range				
2960A	0.01	1 (1.27)	8	—	—	14	4	3	50-0-50	1.4 or less
2990A-10	0.001	0.1 (0.14)	2.5	—	—	5	2	1	50-0-50	1.5 or less

Note 1: Completed products inspection is performed in the vertical orientation (contact point downward) and the stated accuracy is guaranteed.
 Note 2: The bezel clamp cannot be used.

Order No.	Graduation (in)	Range (range/rev) (in)	Accuracy (in)				Repeatability (in)	Dial reading	Measuring force (N)
			First 1 Rev/2.5 Rev/10 Rev		Retrace				
			First 1 Rev	2.5 Rev					
2961A	0.0005	0.04 (0.05)	±0.0005	—/—	—	0.00016	±0.0001	20-0-20	1.4 or less
2991A-10	0.0001	0.008 (0.01)	±0.0002	—/—	—	0.0001	±0.00005	4-0-4	1.5 or less

Note 1: Completed products inspection is performed in the vertical orientation (contact point downward) and the stated accuracy is guaranteed.
 Note 2: The bezel clamp cannot be used.