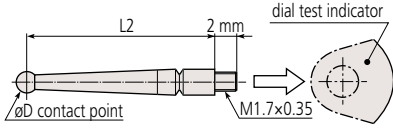


Dial Test Indicators

Contact points, Stems and Holders Optional Accessories for Dial Test Indicators

Contact point (for Metric Models Only*)

* Except for universal type dial test indicator (513-304-10).



ø0.5 mm contact point (Steel) **ø0.7 mm contact point (Steel)**



- | | |
|-----------------------|-----------------------|
| 190547 (L2=11.2 mm) | 190548 (L2=11.2 mm) |
| 21CAB109 (L2=15.2 mm) | 21CAB110 (L2=15.2 mm) |
| 190549 (L2=17.4 mm) | 190550 (L2=17.4 mm) |
| 190654 (L2=18.7 mm) | 190653 (L2=18.7 mm) |
| 21CAB111 (L2=33.9 mm) | 21CAB112 (L2=33.9 mm) |
| 190656 (L2=41.0 mm) | 190655 (L2=41.0 mm) |

ø1 mm contact point (Carbide) **ø2 mm contact point (Carbide)**



- | | |
|---------------------|---------------------|
| 103017 (L2=11.2 mm) | 103010 (L2=11.2 mm) |
| 131314 (L2=15.2 mm) | 103011 (L2=15.2 mm) |
| 103013 (L2=17.4 mm) | 103006 (L2=17.4 mm) |
| 137558 (L2=18.7 mm) | 137557 (L2=18.7 mm) |
| 131316 (L2=33.9 mm) | 131324 (L2=33.9 mm) |
| 136235 (L2=41.0 mm) | 136013 (L2=41.0 mm) |

ø2 mm contact point (Ruby) **ø3 mm contact point (Carbide)**



- | | |
|-----------------------|---------------------|
| 21CZA209 (L2=11.2 mm) | 103018 (L2=11.2 mm) |
| 21CZB068 (L2=15.2 mm) | 131315 (L2=15.2 mm) |
| 21CZA201 (L2=17.4 mm) | 103014 (L2=17.4 mm) |
| 21CZA210 (L2=18.7 mm) | 137559 (L2=18.7 mm) |
| 21CZA211 (L2=41.0 mm) | 131317 (L2=33.9 mm) |
| | 136236 (L2=41.0 mm) |

Swivel Clamps

For ø6 mm stem, ø8 mm stem, and dovetail



902053

For ø4 mm stem, ø8 mm stem, and dovetail

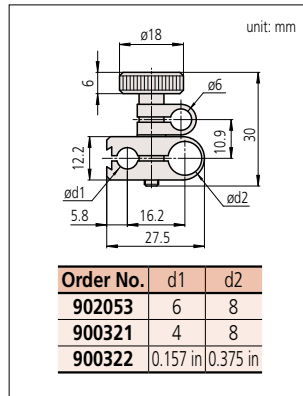


900321

For 0.157 inch DIA. stem, 0.375 inch DIA. stem, and dovetail



900322



Spanner



102037

Holding Bars



9x9 mm **953638** (Length: 50 mm)
900209 (Length: 100 mm)



ø8 mm (0.315 inch DIA) **900211** (Length: 115 mm/4.528 in)



0.25 in x 0.5 in **953639** (Length: 2 in)
900306 (Length: 4 in)

Stems with Knurled Clamp Ring

ø4 mm
(0.157 inch DIA.)



21CZB131



21CZB129

21CZB130

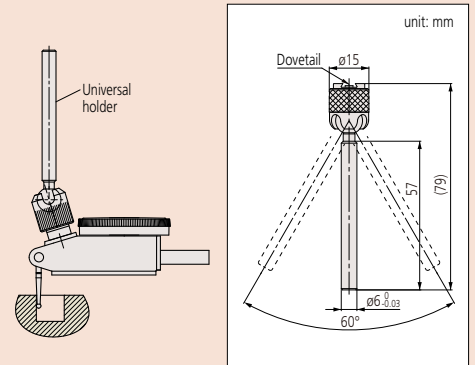
Stem DIA. ød	Stem with dovetail (Individual item)	Nut (Individual item)	Full set (Stem with dovetail+Nut)
	Order No.		
ø4	21CAB106	190322	21CZB131
ø6	21CAB103	190322	21CZB128
ø8	21CAB104	190322	21CZB129
ø0.375 in	21CAB105	190322	21CZB130

Universal Holder (dovetail clamp)

- A universal holder is an attachment used to mount a dial test indicator in a machine tool spindle so that it can be used to align the spindle axis with a workpiece feature such as a hole center, or a machine axis with an edge. (See diagram below.) It also gives some protection against accidental impacts on the indicator.

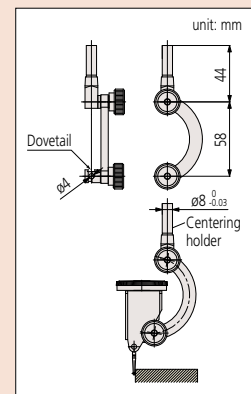


- 21CZA233 (ø8 mm stem)
- 21CZA231 (0.25 inch DIA. stem)
- 21CZA229 (ø6 mm stem)



Centering Holder

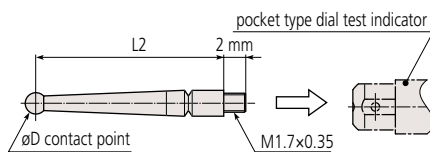
- Allows large diameter cylinders or holes to be centered on a machine tool.



- 901959 (ø8 mm stem)
- 901997 (0.25 inch DIA. stem)

Optional Accessories for Pocket Type Dial Test Indicators

Contact point (for Metric Models Only)



**$\varnothing 0.5$ mm contact point
(Steel)**



190547 (L2=11.2 mm)
190549 (L2=17.4 mm)
190656 (L2=41.0 mm)

**$\varnothing 0.7$ mm contact point
(Steel)**



190548 (L2=11.2 mm)
190550 (L2=17.4 mm)
190655 (L2=41.0 mm)

**$\varnothing 1$ mm contact point
(Carbide)**



136756 (L2=8.6 mm)
103017 (L2=11.2 mm)
103013 (L2=17.4 mm)
137746 (L2=33.3 mm)
136235 (L2=41.0 mm)

**$\varnothing 2$ mm contact point
(Carbide)**



136104 (L2=8.6 mm)
103010 (L2=11.2 mm)
103006 (L2=17.4 mm)
129949 (L2=33.3 mm)
136013 (L2=41.0 mm)

**$\varnothing 2$ mm contact point
(Ruby)**



21CZA209 (L2=11.2 mm)
21CZA201 (L2=17.4 mm)
21CZA211 (L2=41.0 mm)

**$\varnothing 3$ mm contact point
(Carbide)**



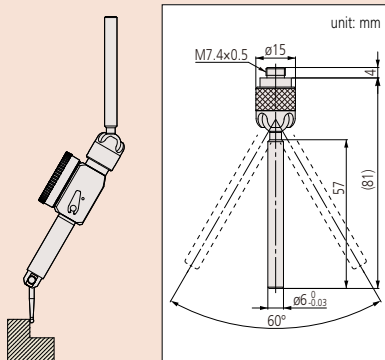
136758 (L2=8.6 mm)
103018 (L2=11.2 mm)
103014 (L2=17.4 mm)
137747 (L2=33.3 mm)
136236 (L2=41.0 mm)

Universal Holder (screw clamp)

- A universal holder is an attachment used to mount a dial test indicator in a machine tool spindle so that it can be used to align the spindle axis with a workpiece feature such as a hole center, or a machine axis with an edge. (See diagram below.) It also gives some protection against accidental impacts on the indicator.



21CZA234 ($\varnothing 8$ mm stem)
21CZA232 (0.25 inch DIA. stem)
21CZA230 ($\varnothing 6$ mm stem)



Stems

$\varnothing 4$ mm (0.157 inch DIA.) **$\varnothing 8$ mm** (0.315 inch DIA.) **0.375 inch DIA.**



102036



102822



102081

Holding Bars



9x9 mm **900209** (Length: 100 mm)



$\varnothing 8$ mm (0.315 inch DIA) **900211** (Length: 115 mm)



0.25x0.5 in **953639** (Length: 2 in)
900306 (Length: 4 in)

Note: Suitable for height gages with a scriber section of 12.7x6.35 mm.

Spanner



301336