

## COMBINATION CARBIDE TIP SCRIBER AND AUTOMATIC CENTER PUNCH S

Long-seller product. For center-punching without hammer and for scribbling.



### USE

- For center punch and scribing work

### MATERIAL

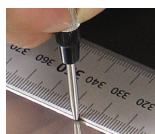
- Body: Aluminum (anodized)
- Tip: Carbide tip (G5)
- Tip hardness: HRA87

### FEATURES

- Spring loaded, no hammer needed
- Can be used as center punch and as scriber
- Strength of the driving force can be adjustable by rotating the rear cap



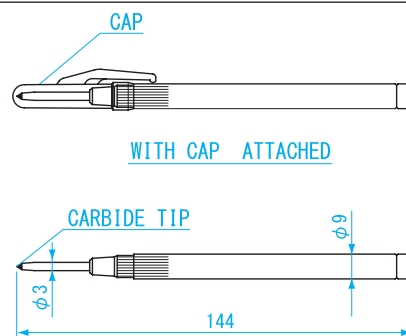
Punching work



Scribing work

### ● OUTLINE DIMENSIONS

Unit: mm



Replacement parts available P340

Order No.	Model No.	Weight
000001	AP-S	21g

## CARBIDE TIP AUTOMATIC CENTER PUNCH M

Long-seller product. For center-punching without hammer.



### USE

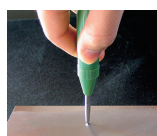
- For center punch

### MATERIAL

- Body: Plastic
- Tip: Carbide tip (G5)
- Tip hardness: HRA87

### FEATURES

- Spring loaded, no hammer needed
- Strength of the driving force can be adjustable by rotating the rear cap



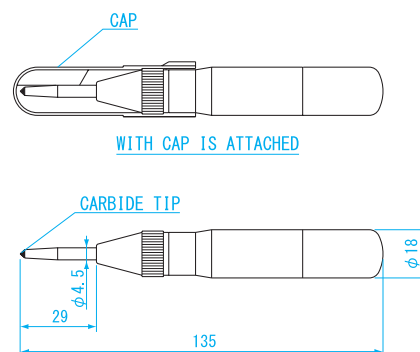
Punching work



Piercing empty spray can for safe disposal

### ● OUTLINE DIMENSIONS

Unit: mm



Replacement parts available P340

Order No.	Model No.	Weight
000002	AP-M	53g

## CARBIDE TIP AUTOMATIC CENTER PUNCH M2

Long-seller product. For center-punching without hammer.



### USE

- For center punch

### MATERIAL

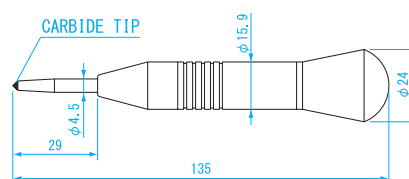
- Body: Brass (nickel plated)
- Tip: Carbide tip (G5)
- Tip hardness: HRA87

### FEATURES

- Spring loaded, no hammer needed
- Strength of the driving force can be adjustable by rotating the rear cap

### ● OUTLINE DIMENSIONS

Unit: mm



Order No.	Model No.	Weight
000004	AP-M2	155g