

Firmware update instructions

This document describes the process of updating the firmware of the Dino-Lite microscopes listed below. This firmware update will enable the Dino-Lites to work with DinoDirect on Android 9 (Pie) and 10 mobile devices.

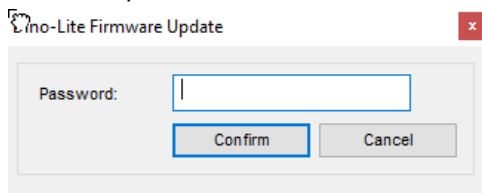
Basic VGA	Premier VGA	Premier 1.3MP	Premier 5.0MP	Edge 1.3MP
AM2111 (R10)	AM3113 (R4/R9/R10A)	AD/AM4x13 (R4) series	AD/AM7013 (R4) series	AM4x15 series
	AM3111 (R4/R9/R10A)	AM4023 (R4)	AM7023 (R4)	AM4x15 (R7, R7A and RA) series
	AF3113 (R9/R10)			AF4x15 series
	AF3111HT (R10)			AF4x15 (RA) series

Please make sure to have DinoCapture 2.0 **ver. 1.5.38.B** or later version installed before starting this procedure, otherwise, the firmware update will be inaccessible.

To install the updated firmware into any of above Dino-Lite microscopes, please follow the instructions below:

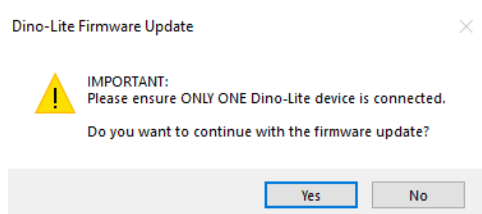
Open your DinoCapture ver. 1.5.38B before connecting above Dino-Lite devices.

1. Press “**Ctrl + Alt + hyphen (-)**” simultaneously to open the “Dino-Lite Firmware Update” window.
2. Enter the password “12345678” and click “Confirm” to continue.

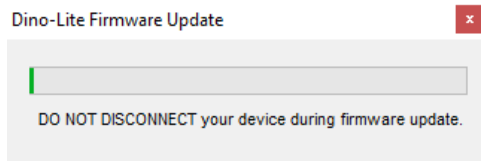


3. Plug in the Dino-Lite device to your PC and press YES to continue with the firmware update procedure.

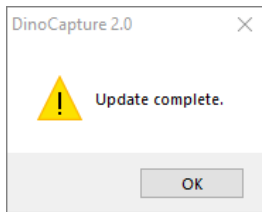
Note: The following dialogue box will show only if when the firmware is available for the connected Dino-Lite devices.



4. DO NOT DISCONNECT the device from the computer during firmware update as Dino-Lite's system files might become corrupt and cease to work properly. If you encounter any issue during or after update completion, please contact us via e-mail sales@anmo.com.tw.



5. Press OK to complete the update.



6. You should now be able to see the image preview which indicates that the device has been successfully updated. To update more Dino-Lites, remove the recently updated Dino-Lite and repeat steps 3 to 5.